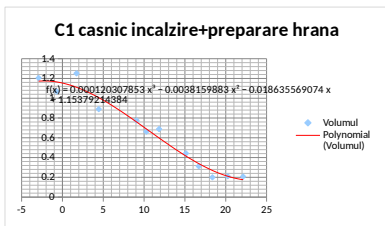


temp medii			CASNIC		NONCASNIC			
			C1		C1		C2	
			nr. consumatori	consum	nr. consumatori	consum	nr. consumatori	consum
2019	-2.921	1	6931	8351.71	441	4176.07698	33	2050.5891
	-0.698	2	6931	7405.01	441	3470.78898	33	949.03756
	4.448	3	6931	6165.65	441	2869.18118	33	510.1086
	10.272	4	6931	4589.51	441	1889.52766	33	541.45386
	15.131	5	6931	3064.08	441	1422.64192	33	676.55918
	18.368	6	6931	1387.67	441	856.421209	33	607.33807
	20.244	7	6931	1460.03	441	233.851973	33	1054.9495
	22.131	8	6931	1440.53	441	313.431379	33	1040.6337
	16.692	9	6931	2165.27	441	357.776021	33	1042.0825
	11.838	10	6931	4770.37	441	1038.96571	33	3911.1624
	9.078	11	6931	5372.79	441	1510.2032	33	2701.9428
	1.722	12	6931	8676.57	441	2584.63242	33	3166.553
client casnic - incalzire + preparare hrana		1	media	1.20				
		2		1.07				
		3		0.89				
		4		0.66				
		5		0.44				
		6		0.20				
		7		0.21				
		8		0.21				
		9		0.31				
		10		0.69				
		11		0.78				
		12		1.25				
NONCASNIC	NC C1	1	media	9.469562319955				
		2		7.870269787755				
		3		6.506079772789				
		4		4.284643218141				
		5		3.225945391837				
		6		1.941998205896				
		7		0.53027658254				
		8		0.71072874966				
		9		0.811283495238				
		10		2.355931305669				
		11		3.42449704263				
		12		5.86084450068				
	NC C2	media	1	62.13906402424				
			2	28.75871381818				
			3	15.45783638485				
			4	16.40769287273				
			5	20.50179335455				
			6	18.40418380303				
			7	31.9681678				
			8	31.53435516061				
			9	31.57825723939				
			10	78.52007370303				
			11	81.87705523333				
			12	95.95615255152				

C1 casnic incalzire+preparare hrana

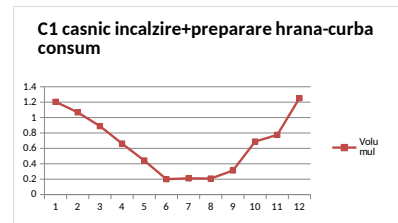
-2.921	1.20497871016
-0.698	1.06839045462
4.448	0.88957554229
10.272	0.66217071936
15.131	0.44208380726
18.368	0.20021142929
20.244	0.21065212361
22.131	0.2078390103
16.692	0.31240374487
11.838	0.68826635969
9.078	0.77518230951
1.722	1.25184964301

consum
anual 7.91360387416



C1 casnicincalzire+preparare hrana -curba consum

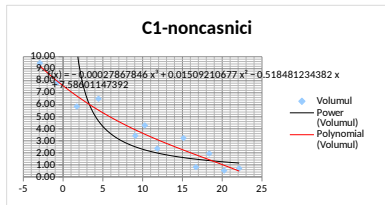
1	1.204979
2	1.06839
3	0.889576
4	0.662171
5	0.442084
6	0.200211
7	0.210652
8	0.207839
9	0.312404
10	0.688266
11	0.775182
12	1.25185



C1-noncasnici

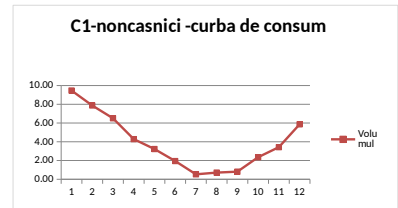
-2.921	9.47
-0.698	7.87
4.448	6.51
10.272	4.28
15.131	3.23
18.368	1.94
20.244	0.53
22.131	0.71
16.692	0.81
11.838	2.36
9.078	3.42
1.722	5.86

consum
anual 46.99



C2-noncasnici

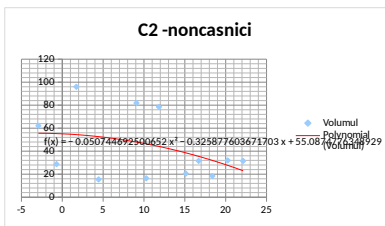
1	9.47
2	7.87
3	6.51
4	4.28
5	3.23
6	1.94
7	0.53
8	0.71
9	0.81
10	2.36
11	3.42
12	5.86



C2-noncasnici

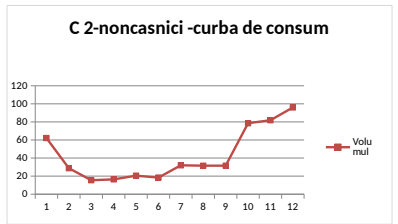
-2.921	62.1390640242
-0.698	28.7587138182
4.448	15.4578363848
10.272	16.4076928727
15.131	20.501793545
18.368	18.404183803
20.244	31.9681678
22.131	31.5343551606
16.692	31.5782572394
11.838	78.520073703
9.078	81.877052333
1.722	95.9561525315

consum
anual 513.103345945



C2-noncasnici

1	62.13906
2	28.75871
3	15.45784
4	16.40769
5	20.50179
6	18.40418
7	31.96817
8	31.53436
9	31.57826
10	78.52007
11	81.87706
12	95.95615



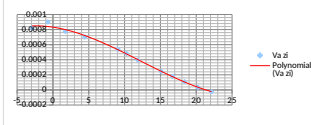
C1 casnic incalzire+preparare hrana

$$y = 0.002x^2 - 0.0028x + 0.0185x + 1.1139$$

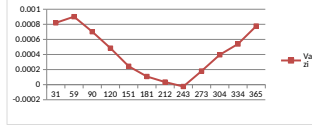
Luna	temp medie	h(T)	h(T)	Van	C
lunara	lunar	znic	znic		
1	-2.921	1.1732158166	0.0378456715	7.9136038742	365.23
2	-0.698	1.16489741796	0.04160347921	7.9136038742	365.23
3	4.448	1.00408551146	0.0320921165	7.9136038742	365.23
4	10.272	0.67071262514	0.02232905417	7.9136038742	365.23
5	15.131	0.3487843751	0.0125110121	7.9136038742	365.23
6	18.368	0.149804062	0.00499346873	7.9136038742	365.23
7	20.244	0.0495060188	0.0019994942	7.9136038742	365.23
8	22.131	-0.0350703244	0.0011313008	7.9136038742	365.23
9	16.692	0.24963920139	0.00832130671	7.9136038742	365.23
10	11.838	0.5669352603	0.01828977150	7.9136038742	365.23
11	9.078	0.74660275506	0.0248867585	7.9136038742	365.23
12	1.722	1.1110133427	0.03583914007	7.9136038742	365.23

temp medie	zile	Va zi
lunara		
-2.921	31	0.0008199744
-0.698	59	0.0009013921
4.448	90	0.0007021864
10.272	120	0.0004840039
15.131	151	0.0002437694
18.368	181	0.0001081898
20.244	212	2.465264E-05
22.131	243	-2.451104E-05
16.692	273	0.0001802916
11.838	304	0.0003962715
9.078	334	0.0005929331
1.722	365	0.000765004

Va zi-B1 casnic incalzire+preparare hrana



Va zi-B1 casnic incalzire+preparare hrana



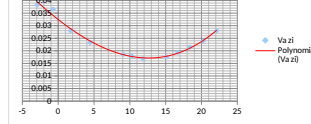
C1 -necasnici

$$y = 0.0003x^2 + 0.0151x - 0.5185x + 7.586$$

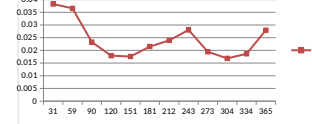
Luna	temp medie	h(T)	h(T)	Van	C
lunara	lunar	znic	znic		
1	-2.921	9.22189853631	0.29748059795	46.992060373	365.23
2	-0.698	7.9516775988	0.28411313428	46.992060373	365.23
3	4.448	5.60486173942	0.18080199159	46.992060373	365.23
4	10.272	4.17830510449	0.1927936838	46.992060373	365.23
5	15.131	4.2389847903	0.13647543481	46.992060373	365.23
6	18.368	5.0157992201	0.1671933073	46.992060373	365.23
7	20.244	5.7664769964	0.1860218387	46.992060373	365.23
8	22.131	6.73857697333	0.21801858364	46.992060373	365.23
9	16.692	4.53363510011	0.15112117031	46.992060373	365.23
10	11.838	4.06177144414	0.13102488529	46.992060373	365.23
11	9.078	4.34788489117	0.14492949637	46.992060373	365.23
12	1.722	6.73945065411	0.217401634	46.992060373	365.23

temp medie	zile	Va zi
lunara		
-2.921	31	0.0382730355
-0.698	59	0.0236552144
4.448	90	0.0232614869
10.272	120	0.0179192004
15.131	151	0.0175842855
18.368	181	0.0215106315
20.244	212	0.0239330581
22.131	243	0.0280496713
16.692	273	0.0194428541
11.838	304	0.0168573014
9.078	334	0.0186462304
1.722	365	0.0279702963

Va zi-C2-necasnici



Va zi-C2-necasnici



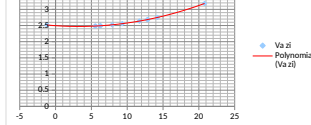
C2 necasnici

$$y = 0.0507x^2 - 0.3259x + 55.087$$

Luna	temp medie	h(T)	h(T)	Van	C
lunara	lunar	znic	znic		
1	-1.2	55.551088	1.79197058065	513.10334595	365.23
2	5.5	54.828223	1.76868241933	513.10334595	365.23
3	6.3	55.046113	1.77568106452	513.10334595	365.23
4	7.9	55.676577	1.7960186129	513.10334595	365.23
5	9.3	55.441173	1.820683	513.10334595	365.23
6	12.8	59.222168	1.91039251613	513.10334595	365.23
7	20.8	70.243128	2.26590735484	513.10334595	365.23
8	14.21	60.69351287	1.9578525387	513.10334595	365.23
9	11.7	58.214293	1.87788041933	513.10334595	365.23
10	12.9	59.318877	1.9354441933	513.10334595	365.23
11	5.6	54.851912	1.76941651613	513.10334595	365.23
12	6.2	55.015328	1.774688	513.10334595	365.23

temp medie	zile	Va zi
lunara		
-1.2	31	2.5173609877
5.5	59	2.4846036254
6.3	90	2.494477469
7.9	120	2.5230476651
9.3	151	2.576962059
12.8	181	2.683720217
20.8	212	3.1831475575
14.21	243	2.750395843
11.7	273	2.6380471635
12.9	304	2.6881476449
5.6	334	2.4856770289
6.2	365	2.4930824115

Va zi-necasnici comerciali



Va zi-necasnici comerciali

